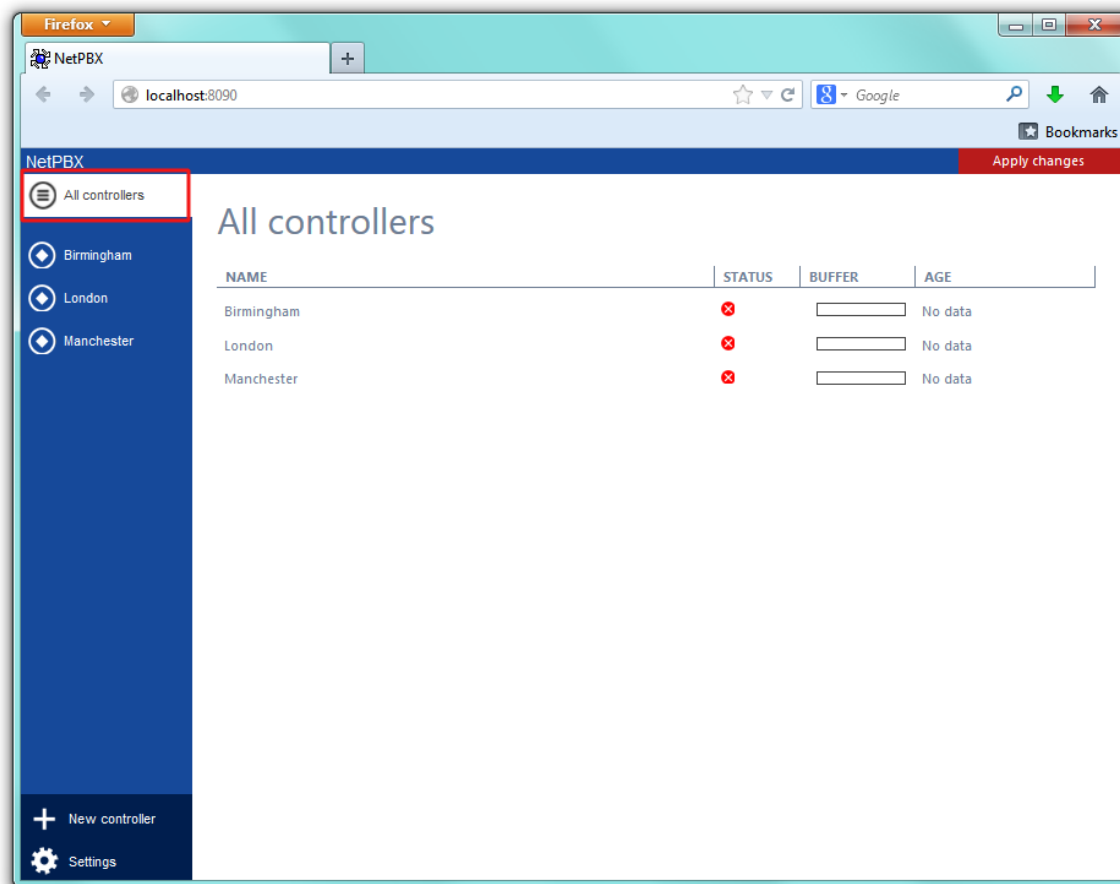


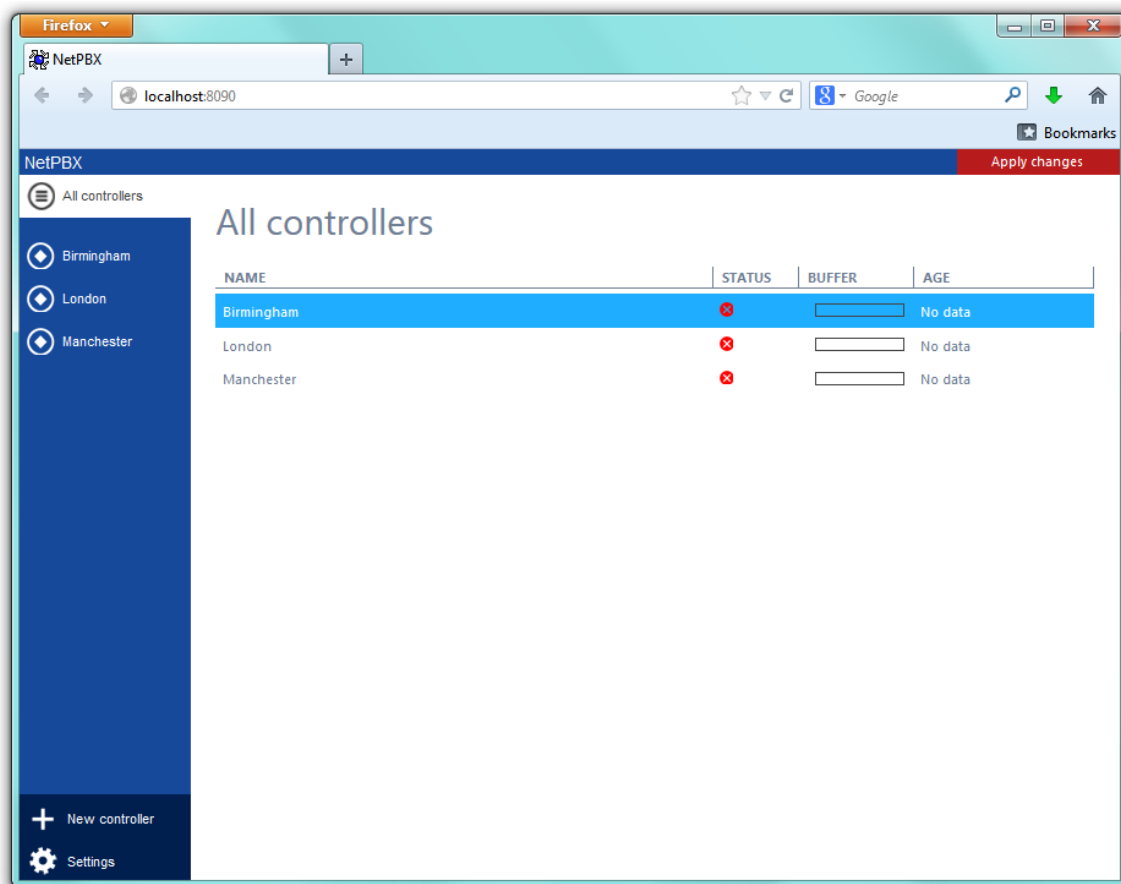
# What is a controller?

A controller is the system object that allows you to collect and deliver your call logging data from a data source to an output location. The controller can encompass one or more [inputs](#) or [outputs](#), and each input/output instance can invoke a different type of connection.

To see a list with all the controllers configured in the system, click on the `All controllers` button, as shown below:



To view or edit the settings of a controller, refer to the [Configuring a controller](#) section.



To add a new controller to the system, refer to the [Adding a controller](#) section.