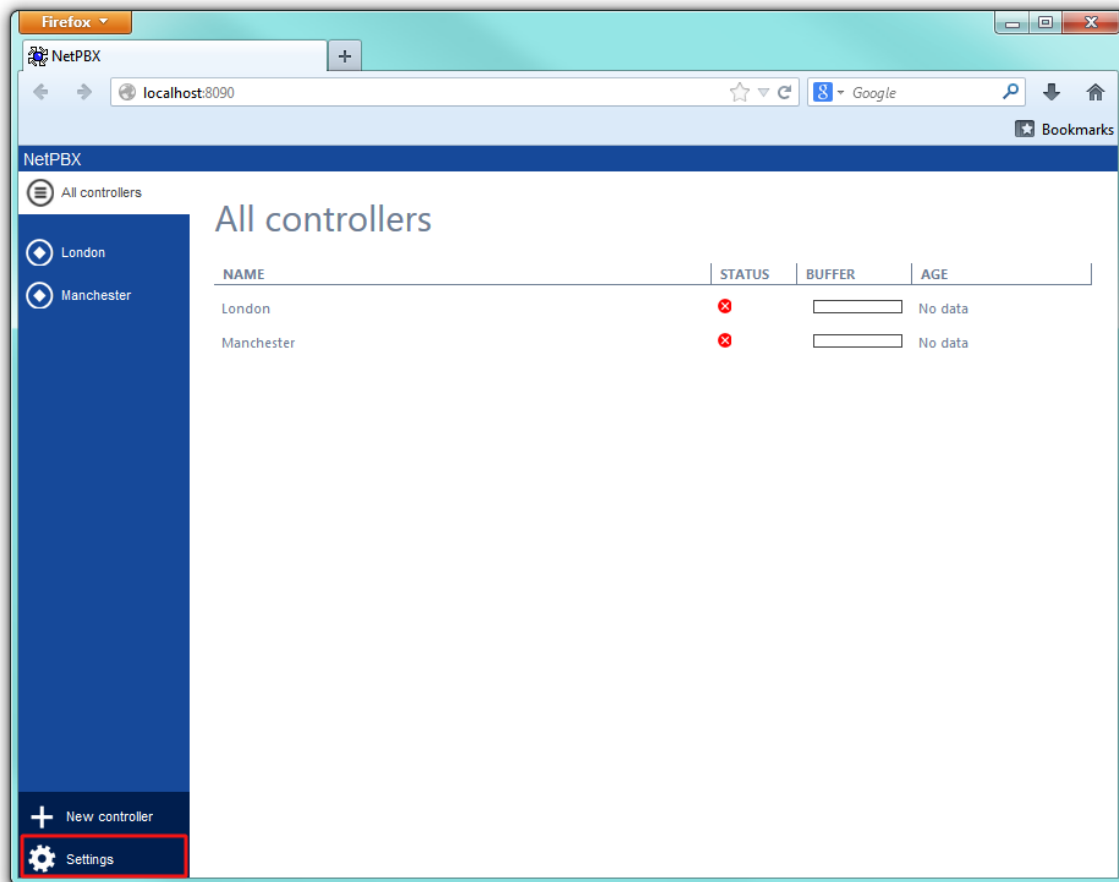
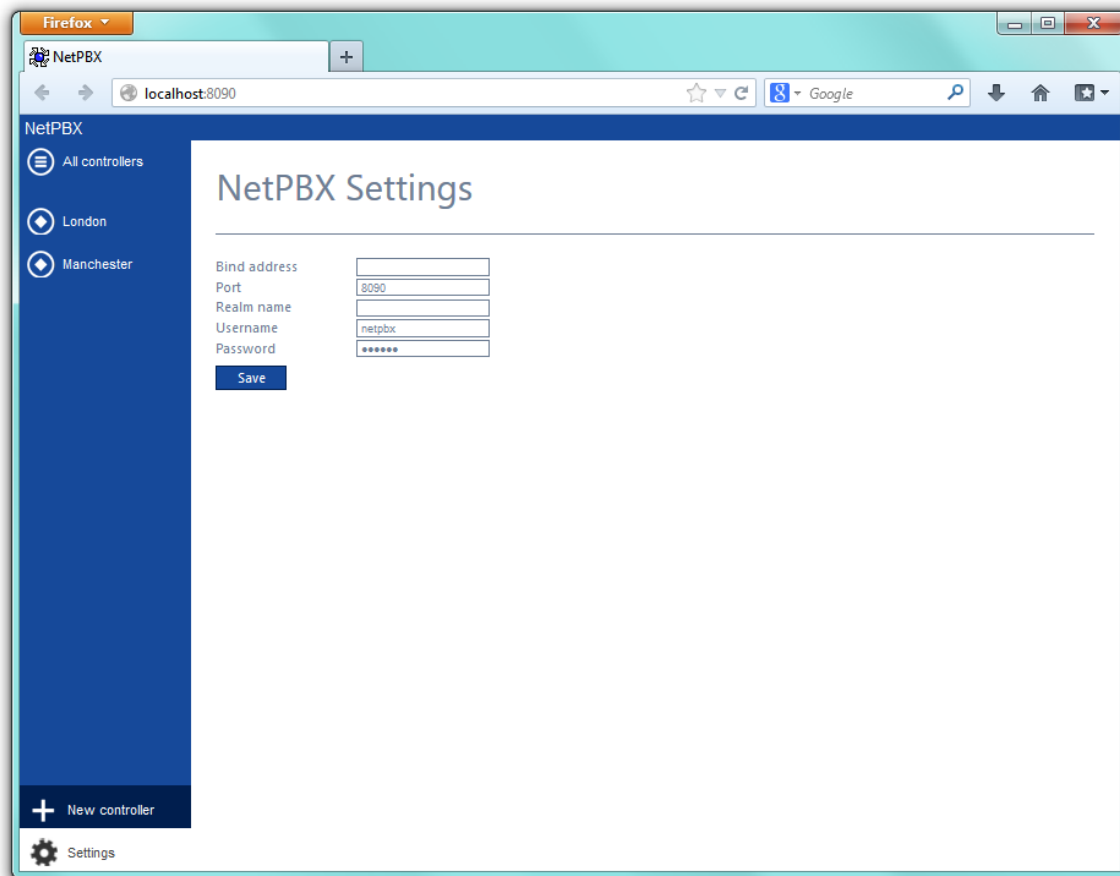


NetPBX settings

To configure the general properties of NetPBX, click on the **Settings** button from the main NetPBX screen, as shown below:



The NetPBX settings window will open, where you can configure its properties, such as IP address, port number or login credentials, as shown below:



| Field | Description |
|------------|---|
| Bind | If the PC running NetPBX has more than one IP address, you can bind the web service to the IP address you want NetPBX to use. |
| Port | By default, NetPBX is running on port 8090. To change the port number, overtype the current entry. |
| Realm name | If your network uses realm names for routing and authentication, enter the realm name of the NetPBX service user account in the box provided. |
| Username | Enter a username that will used to login to NetPBX |
| Password | Enter a password that will be used to login to NetPBX |