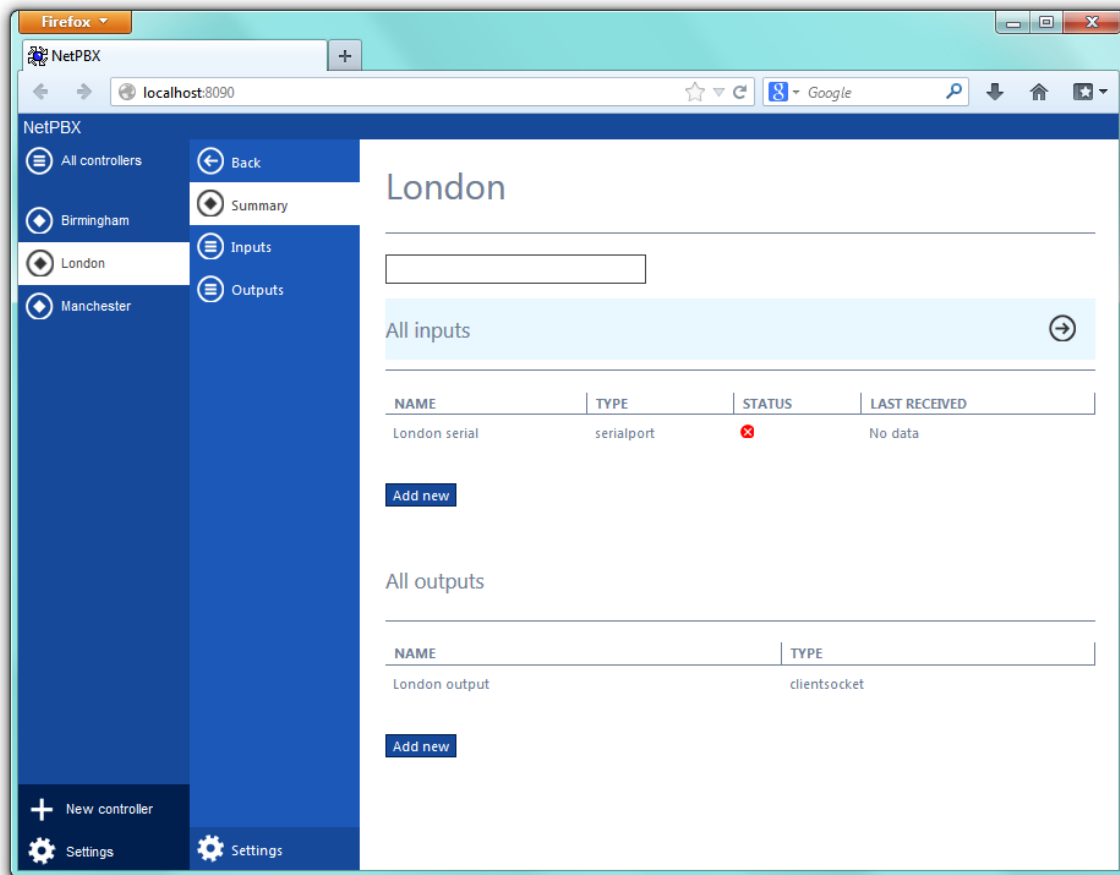


# Summary

The **summary** screen gives you an overview of all the inputs and outputs configured for the selected controller. From here you can add new inputs/outputs to the controller or navigate to the configuration section of each particular input/output and modify their settings.



When you first set up the system, the **summary** screen will be empty. For information on how to add an input or output to a controller, refer to the **Inputs** or **Outputs** sections below.