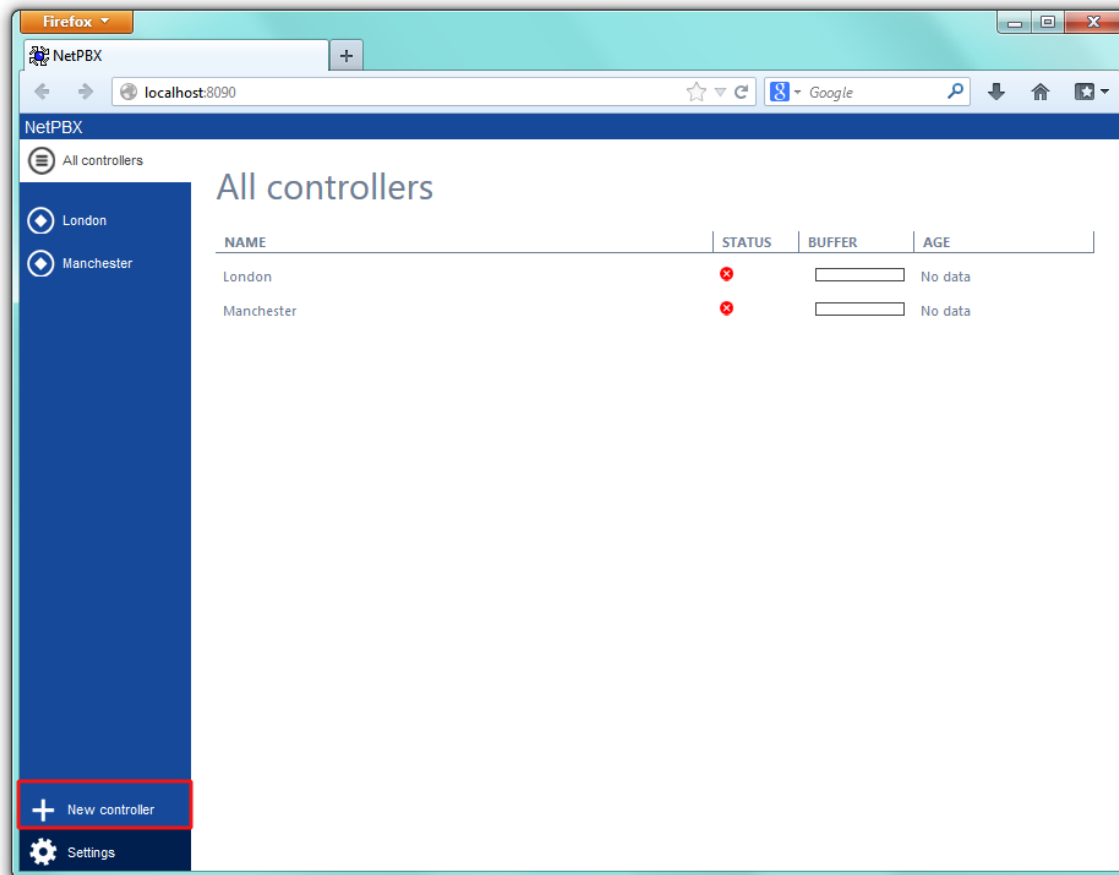
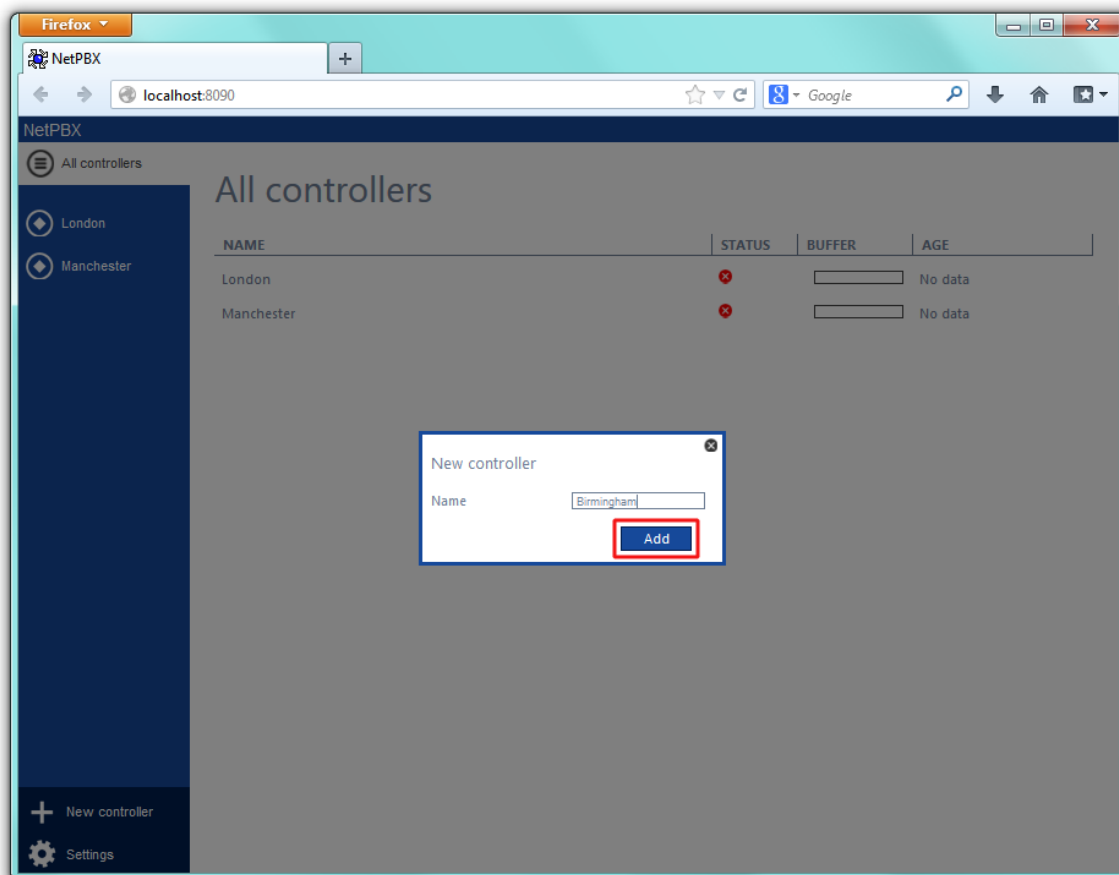


Adding a controller

To add a controller to the system, click on the **New controller** tab at the bottom-left corner of the screen, as shown below:



A new window will appear, allowing you to name your controller. Click on the **Add** button to add the new controller to the system, as shown below:



The [summary](#) screen will be displayed, allowing you to enter the details of your controller. For information on how to configure these details, check the [Configuring a controller](#) section.

