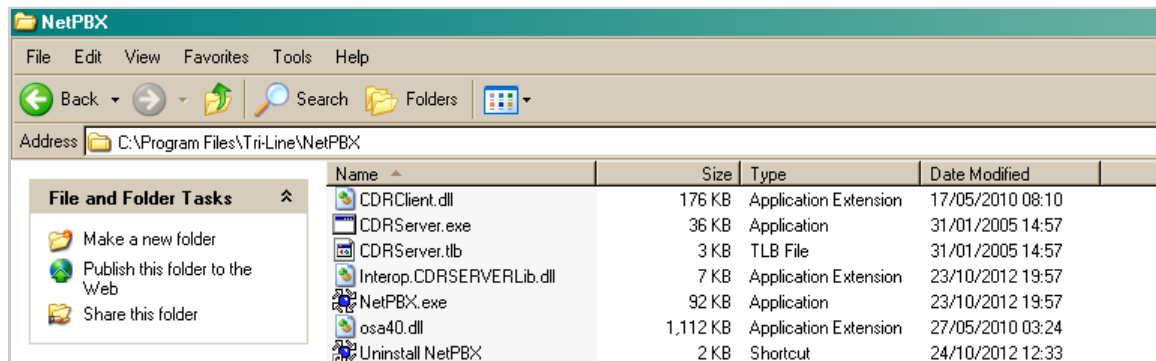


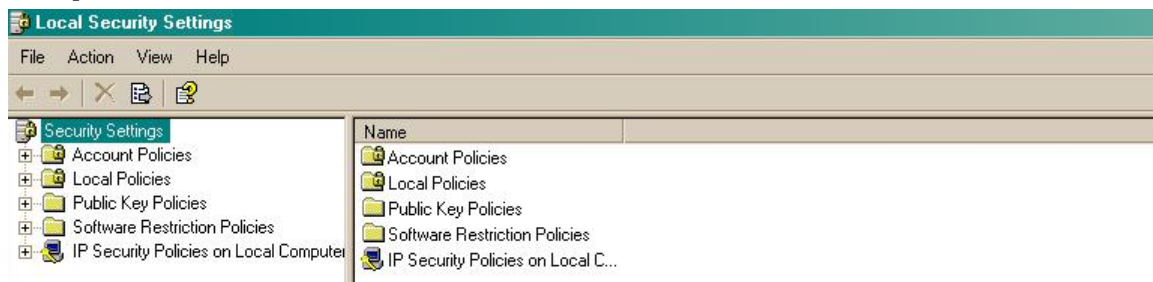
Connecting BCM v3.7 or below with NetPBX

Follow the instructions below to connect a BCM v3.7 or below with NetPBX:

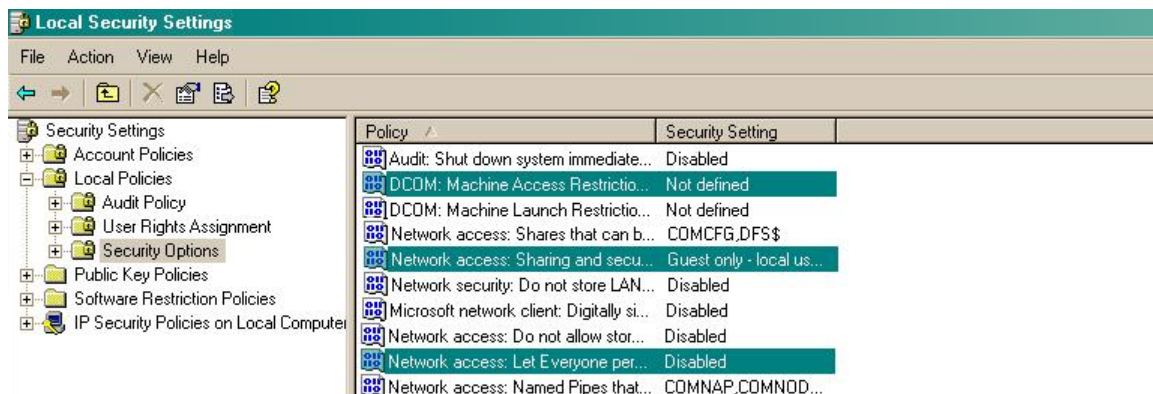
1. Make sure the **CDRServer.EXE** and **Interop.CDRSERVERLib.dll** files are placed in the same folder as **NetPBX.EXE**, usually located in {pf}\Tri-Line\NetPBX.



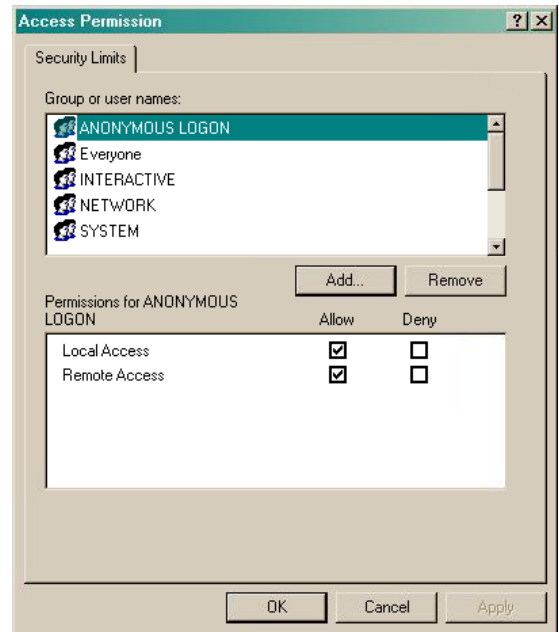
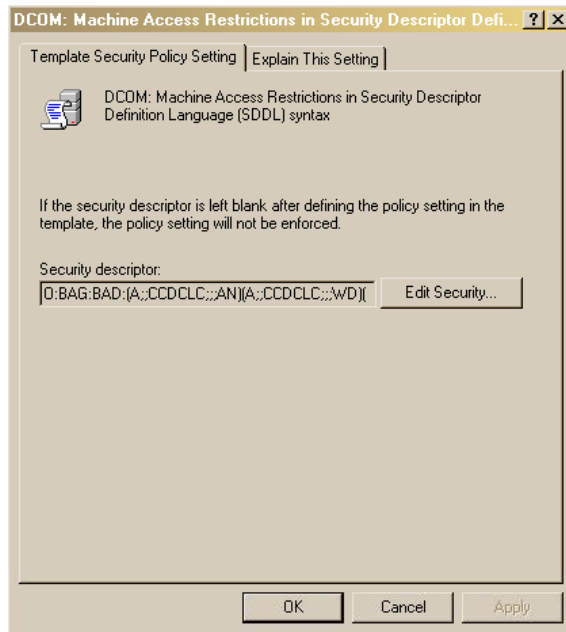
2. Register **CDRServer.EXE** by running the command line with administrator privileges and typing the following command under the directory path of the NetPBX folder: **CDRServer.EXE/regserver**.
3. Open the computer's local security policies: **Start -> Control Panel -> Administrative Tools -> Local Security Policy**.



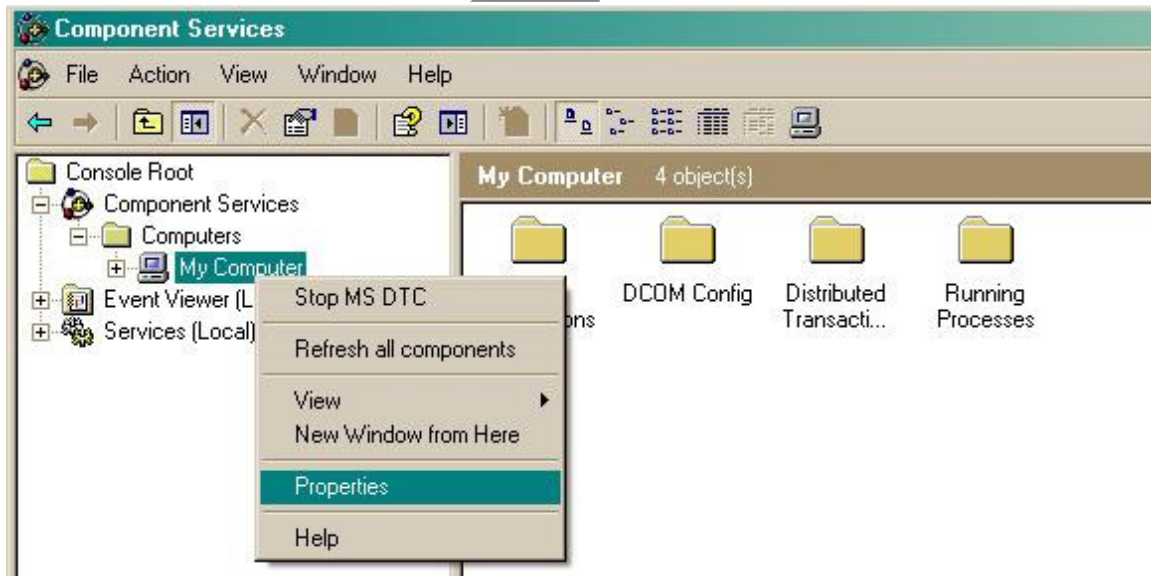
4. Within the **Security Settings\Local Policies\Security Options** tree, change the following items as highlighted in the screenshot below:



- a. **Network Access: Let Everyone permissions apply to anonymous users.** Set this to **Enabled**.
- b. **Network Access: Sharing security model for local accounts.** Set this to **Classic**.
- c. **DCOM: Machine Access Restrictions:** Click on **Edit Security** and add the following user accounts: **Anonymous**, **Everyone**, **Interactive**, **Network**, **System**. Set each one to have full access rights.

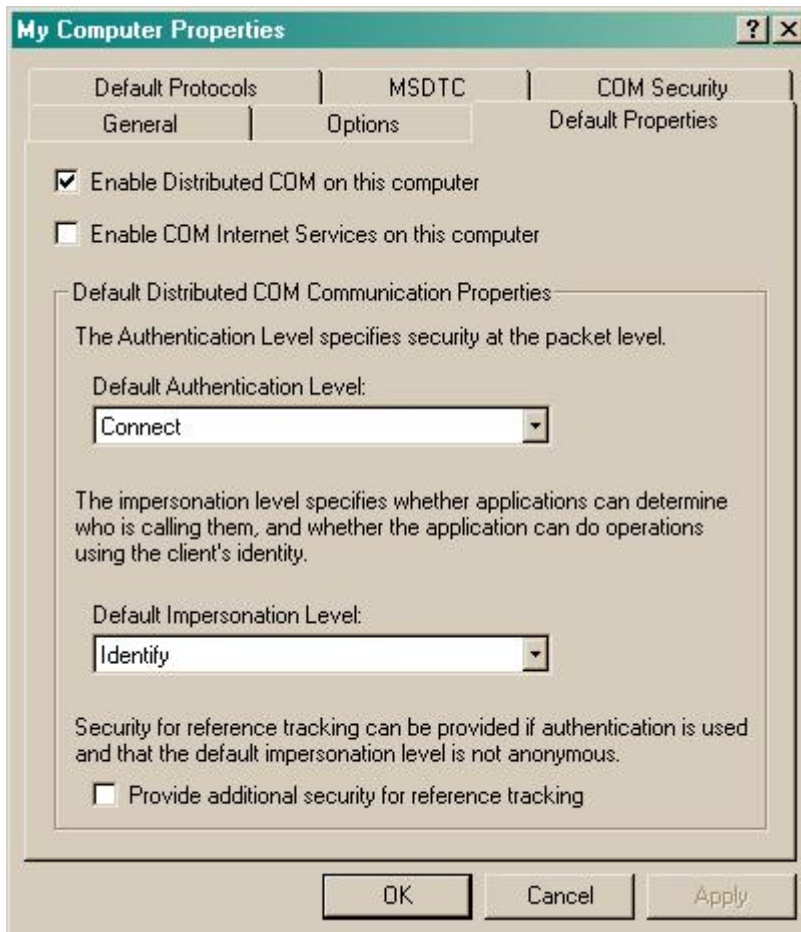


5. Next step is to modify the way DCOM behaves on the computer by executing the DCOM configuration program: `Start -> Run -> DCOMCNFG [enter]`. Browse the tree to the following location: `Console Root -> Component Services -> Computers -> My Computer`. Right-click on `My Computer` for `Properties` and amend or update the following options:



- a. On the `Default Properties` tab:
- `Enable Distributed COM on this computer`: tick the box for this option
 - `Default Authentication Level`: set this to `Connect`

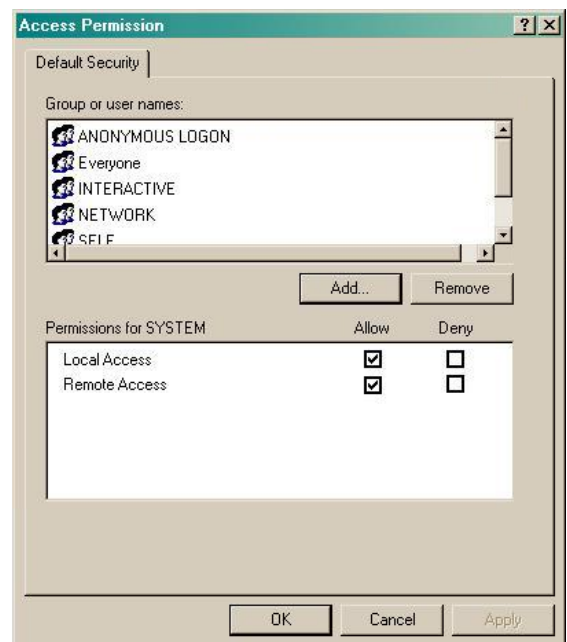
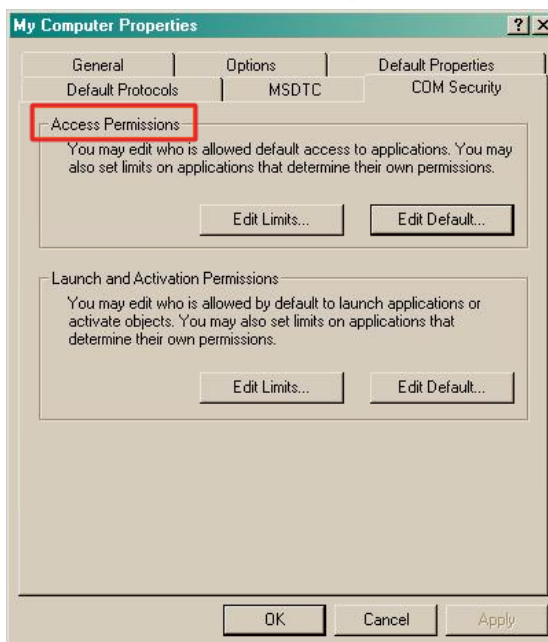
Default Impersonation Level: set this to **Identify**



- b. On the **COM Security** tab:

Go to the **Access Permissions** section and select **Edit default**.

Add the following accounts and set both local and remote access permissions: **Anonymous**, **Everyone**, **Interactive**, **Network**, **Local Service** and **System**.



Go to the **Launch and Activation Permissions** section and click on **Edit default** tab.

Add or update the following accounts to give them all local and remote access permissions: **Anonymous**, **Everyone**,

Interactive, Network, Local Service and System.

