
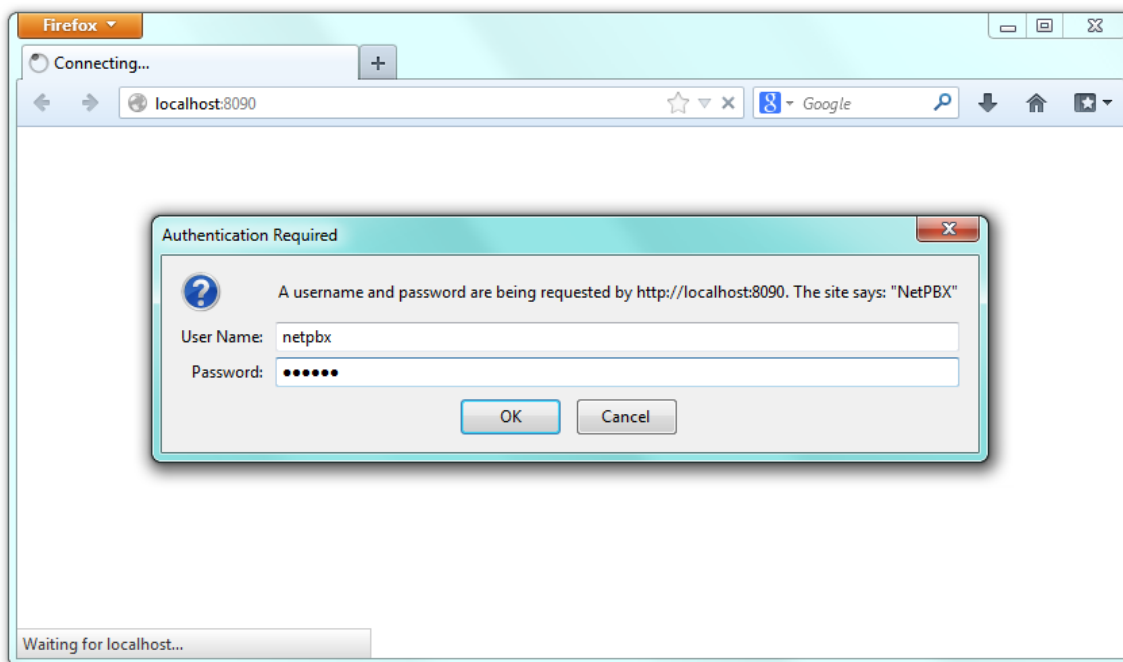


Accessing the system

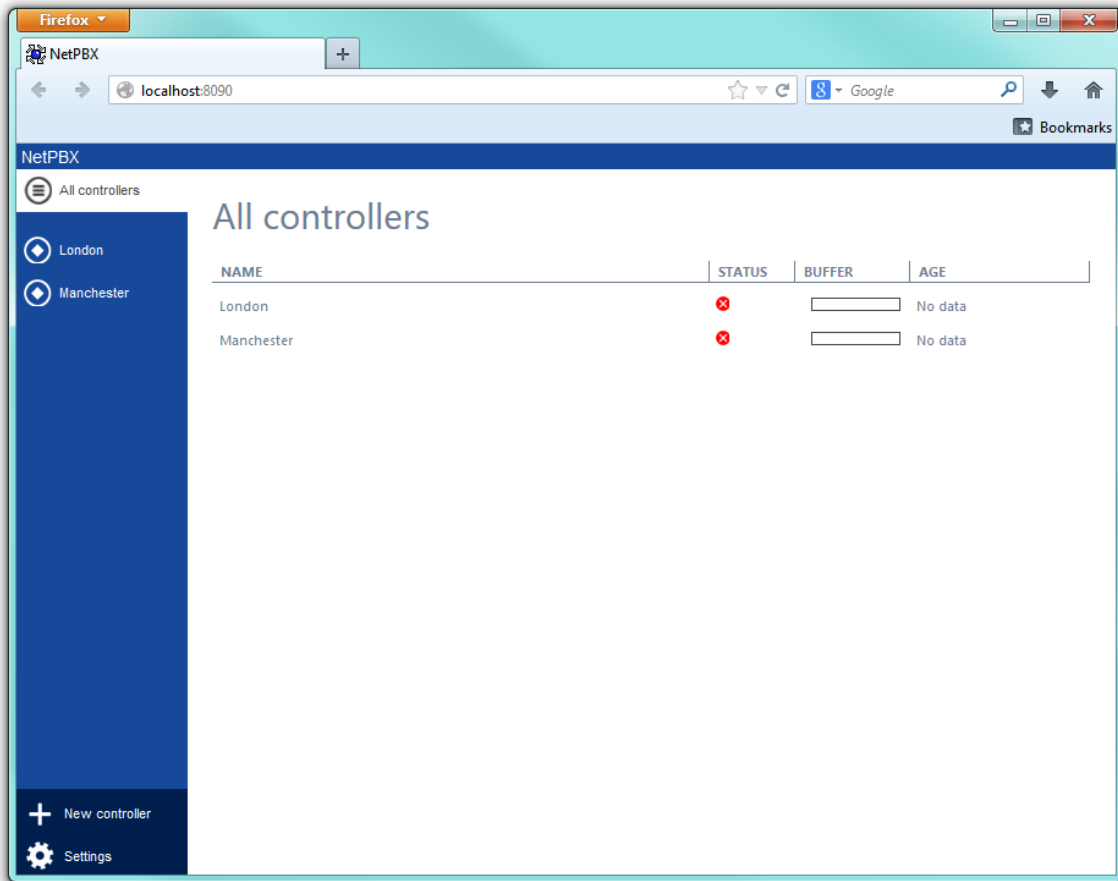
 NetPBX can be accessed via a standard web browser from any PC on your network.

To access NetPBX, open a web browser, go to the IP address or host name of the PC running NetPBX and log in using the following credentials:

- **username:** `netpbx`
- **password:** `netpbx`



The main interface of NetPBX will be displayed, where you can view a list of the currently-configured [controllers](#), as shown below:



When you first install the software, the `All controllers` list will be empty. To add a controller, refer to the [Adding a controller](#) section.